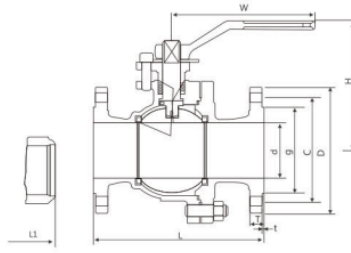
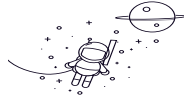


Ansi Stainless Steel Flange Ball Valve-class 150Lb



seleccionar Consulta		Tamaño		Dimensiones (mm)							W norte- φ
		DN	d	l	D	C	gramo	t	t	h	
1/2"	15	108	89	60.50	35	12.70	1.60	87.50	142	4-15	
3/4"	20	117	98	70	43	12.70	1.60	87.50	142	4-15	
1"	25	127	108	79.50	51	13	1.60	91.50	142	4-15	
1 1/4"	32	140	117	89	64	14.50	1.60	107	190	4-15	
1 1/2"	40	165	127	98.50	73	15	1.60	128	200	4-15	
2"	50	178	152	120.50	92	16	1.60	136	200	4-19	
2 1/2"	65	190	178	139.50	105	18	1.60	158	300	4-19	
3"	80	203	190	152.50	127	19	1.60	196	350	4-19	
4"	100	229	229	190.50	157	24	1.60	212	700	4-19	
5"	125	256	254	215.90	186	24	1.60	252	1100	8-22	
6"	150	394	279	241.50	261	26	1.60	272	1100	8-22	
8"	200	457	343	298.50	270	29	1.60	342	1500	8-22	
10"	250	533	406	362	324	30	1.60	345	1500	12-25	
12"	305	610	483	432	381	32	1.60	385		12-25	
14"	337	686	535	476	413	35	1.60	430		12-29	
16"	387	762	597	540	470	37	1.60	470		16-29	
18"	489	914	698	635	582	43	1.60	590		20-32	